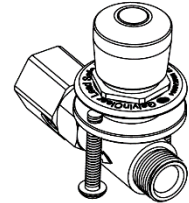


# Ezy-Drink<sup>®</sup> Lead Safe<sup>™</sup> Remote Push Button Activation Valve Only

PRODUCT CODE:

- 170.81.73.01



## SPECIFICATIONS

- Remote push button valve is designed to operate at full mains pressure.
- Adjustable built-in flow regulating screw.
- Made from Lead Safe<sup>™</sup> DR Brass\*

**IMPORTANT:** All Ezy-Drink<sup>®</sup> remote taps are tested in accordance with AS/NZS 3718 and leave our premises in good working order.

\*Our Lead Safe<sup>™</sup> product range is compliant with the Lead-Free Requirements of the NCC 2022 Vol. Three, Clause A5G4(2) and NSF/ANSI 372.

**WARNINGS:** Special attention to be paid on notes, photos, images, or drawings of assembly steps marked with the warning symbol.



## TECHNICAL DATA

Inlet	G ½" - Female	
Outlet	G ½" - Male	
Headwork	Push Button	
Working Pressure Range (kPa)	Min	50
	Max	500
Working Temperature Range (°C)	Min	5
	Max	60
Nominal Flow Rate (LPM)	N/A	
Finish	Chrome	

**NOTE:** Galvin Engineering continually strives to improve their products. Specifications may change without notice.

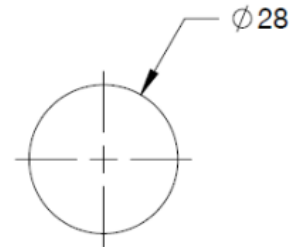
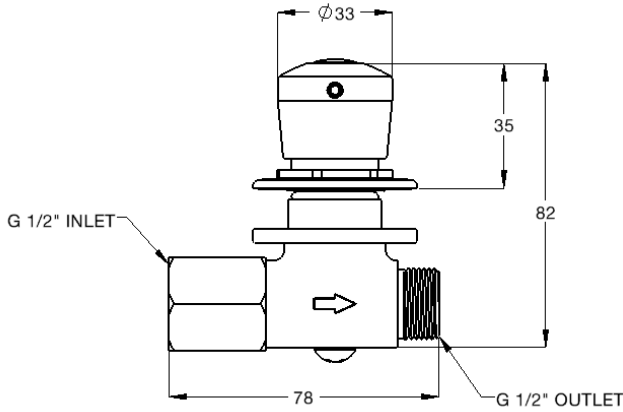
## TOOLS REQUIRED

- Power drill
- Spanner or adjustable crescent
- Screw driver

**PRE-INSTALLATION - MOUNTING DETAILS**

If the mounting holes do not already exist, mark out and drill the holes in the bench/trough, as shown in rough-in dimensions.

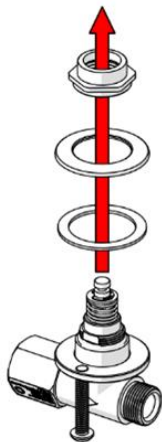
**⚠ Note: Before installation, all lines must be flushed. We recommend that a line strainer be installed prior to the valve to eliminate any foreign material.**



**⚠ Rough-in Dimensions**

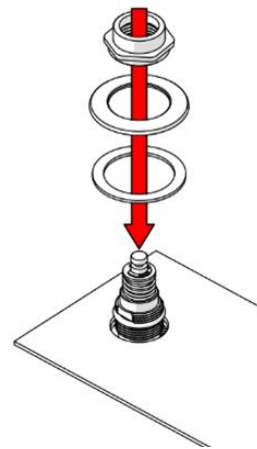
**INSTALLATION**

**IMPORTANT:** Galvin Engineering products must be installed in accordance with these installation instructions and in accordance with AS/NZS 3500, the PCA and your local regulatory requirements. Water and/or electrical supply conditions must also comply to the applicable national and/or state standards. Failing to comply with these provisions shall void the product warranty and may affect the performance of the product.



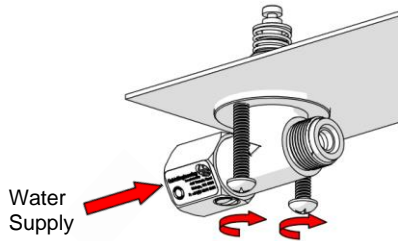
**1. Disassemble**

- Disassemble valve as shown.
- Do not remove the whole top assembly.



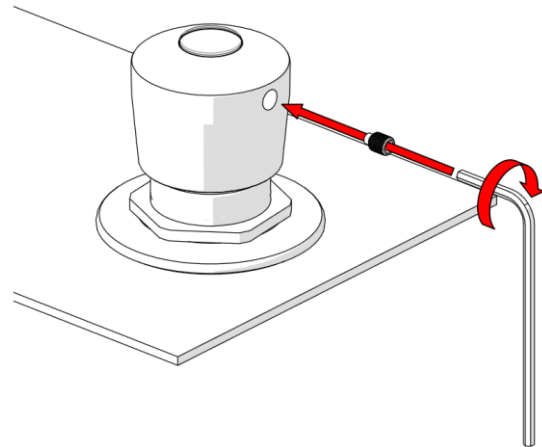
**2. Fit Inlet Body**

- Ensure the sealing rubber washers are placed underneath the inlet body.
- Fit the inlet body into the trough or bench as shown.



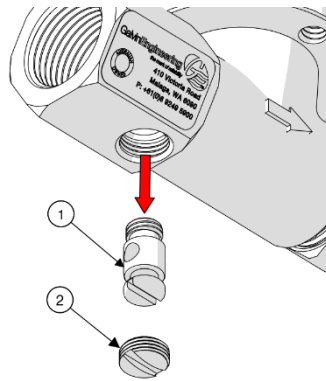
### 3. Secure Inlet Body

- Tighten the screws on the inlet body as shown. Do not overtighten.
- Connect water supply.



### 4. Fit handle

- Position and fit the handle and grub screw as shown.
- Tighten firmly using the supplied hex key.



### 5. Testing

- Once the valve has been installed and tested for leaks, the water flow may be adjusted to suit the available pressure.
- To adjust water flow
  1. Remove the blanking screw ②.
  2. Adjust the water flow by turning the regulating screw ①.
  3. Once desired flow has been achieved, replace blanking screw.



**Note: The full range from minimum flow to maximum flow is only ¼ turn.**

TROUBLESHOOTING		
PROBLEM	CAUSE	RECTIFICATION
Inconsistent flow	Blocked top assembly	Remove top assembly and clean
Water is not flowing from tap	Water is turned off	Turn on water
	Blocked flow regulating screw	Remove regulating screw and clean
Continuous flow	Top assembly loose or internally obstructed or damaged	Remove top assembly, clean with water, and regrease spindle if required
Rate of flow inadequate	The flow regulating screw may not be adjusted correctly	Remove blanking screw and adjust flow regulating screw as described above
Button hard to press	The mains pressure might be too high	Reduce to below 500kPa (70PSI). Regrease spindle if required

## WARRANTY

Galvin Engineering products are covered under our Manufacturer's Warranty. Galvin Engineering products must be installed in accordance with the installation instructions and in accordance with AS 3500 and NCC Volume Three, relevant Australian Standards and local authorities applicable to product being installed. Water and electrical supply conditions must also comply to the applicable national and/or state standards, failing to comply with these provisions may void the product warranty and affect performance of the product.

Please visit [www.galvinengineering.com.au](http://www.galvinengineering.com.au) to view the full warranty, our Installation Compliance and Maintenance & Cleaning information as well as any other additional information.

Within Australia: 1300 514 074 Outside Australia: P: +61 (0)8 9338 2344

F: +61 (0)8 9338 2340

sales@galvinengineering.com.au

www.galvinengineering.com.au

ABN: 78 008 719 382

PERTH | SYDNEY | MELBOURNE | BRISBANE | ADELAIDE

